



# Instruction Manual

Product Manual & Specifications

## **AG Dispenser models**

# AG150 Dispenser

**Garnett Farms Engineering Limited**

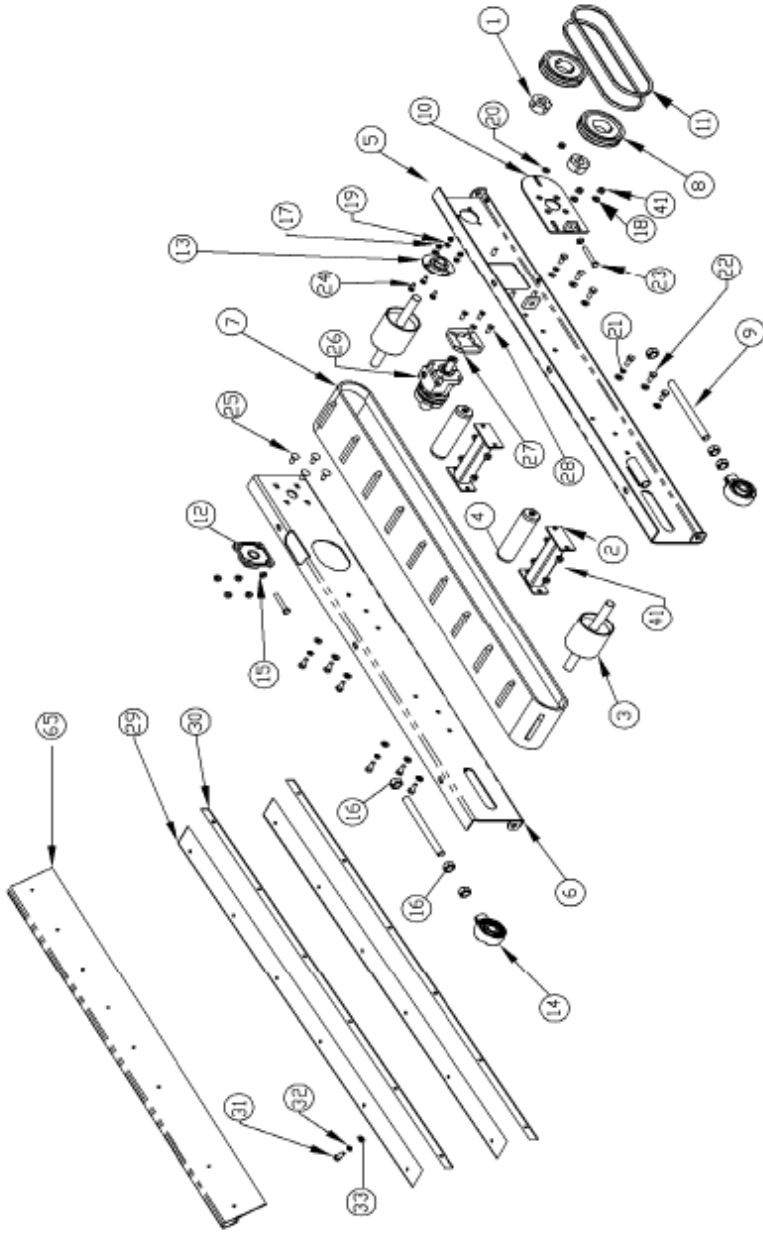
Clay Bank Farm, Allostock, Nr. Knutsford,

Cheshire, WA16 9NE

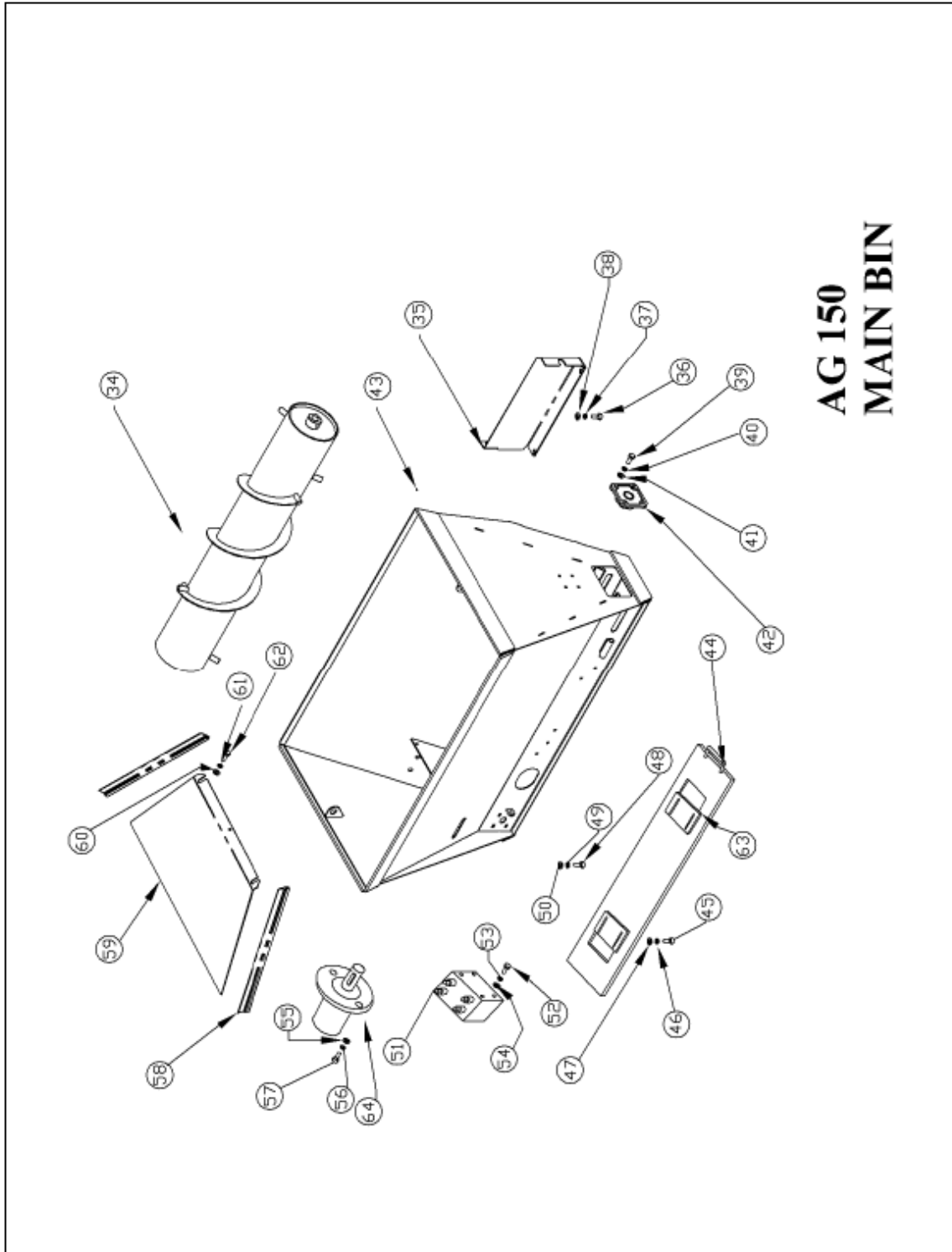
England, UK

Tel: +44 (0)1565 722922 Fax: +44 (0)1565 723303

Website : [www.ag-products.co.uk](http://www.ag-products.co.uk) Email : [info@ag-products.co.uk](mailto:info@ag-products.co.uk)



# AG 150 CONVEYOR



**AG 150  
MAIN BIN**

AG 150

	ITEM NO.	QUANTITY	PART NO.	DESCRIPTION
AG 150	1	2	MC6-1	Tapered bush
AG 150	2	2	MC7-1	Brace
AG 150	3	2	MC7-2	Head roller
AG 150	4	2	MC7-3	Idler roller
AG 150	5	1	MC7-4	Conveyor side front
AG 150	6	1	MC7-5	Conveyor side rear
AG 150	7	1	MC7-6	Conveyor belt
AG 150	8	2	MC6-2	Pulley
AG 150	9	2	MC6-3	Threaded tension bar
AG 150	10	1	MC6-4	Tension plate assembly
AG 150	11	2	MC6-5	V-belt (XP2900 - STANDARD)
AG 150	12	1	MC6-6	Flange bearing (Conveyor)
AG 150	13	1	MC6-7	Flange bearing
AG 150	14	2	MC6-8	Hanger bearing
AG 150	15	2	MC6-9	M10 plain nut
AG 150	16	6	MC6-10	M20 plain nut
AG 150	17	3	MC6-11	M8 thin nyloc nut
AG 150	18	3	MC6-12	M10 plain washer
AG 150	19	3	MC6-13	M8 plain washer
AG 150	20	3	MC6-12	M10 plain washer
AG 150	21	16	MC6-12	M10 plain washer
AG 150	22	12	MC6-14	M10 *25 H.T Setscrew (8.8)
AG 150	23	2	MC6-15	M10 *70 H.T Setscrew (8.8)
AG 150	24	3	MC6-16	M8 * 25 Cup Square Bolt
AG 150	25	4	MC6-17	M10 *25 Cup Square Bolt
AG 150	26	1	MC6-18	Hyd Motor DH 25 (Conveyor-Standard)
AG 150	27	1	MC6-19	Motor spacer
AG 150	28	4	MC6-20	3/8 - 16 unc *1 CSK Skt Screw
AG 150	29	2	MC7-7	Side skirt (large) metal clamp
AG 150	30	2	MC7-8	Side skirt (small) metal clamp
AG 150	31	12	MC6-21	M8 * 40 bolt
AG 150	32	12	MC6-13	M8 plain washer
AG 150	33	12	MC6-23	M8 Nyloc nut
AG 150	34	1	MC7-9	Auger
AG 150	35	1	MC7-10	V-belt guard
AG 150	36	2	MC6-24	M8 * 20 bolt
AG 150	37	3	MC6-13	M8 plain washer
AG 150	38	2	MC6-25	M8 spring washer
AG 150	39	4	MC6-26	M10 *35 bolt
AG 150	40	4	MC6-12	M10 plain washer
AG 150	41	10	MC6-27	M10 nyloc nut
AG 150	42	1	MC6-28	Flange bearing (Auger)
AG 150	43	1	MC7-11	Main bin
AG 150	44	1	MC7-12	Aperture plate
AG 150	45	4	MC6-29	M8 * 30 Cup Square Bolt
AG 150	46	8	MC6-22	M8 plain washer
AG 150	47	8	MC6-23	M8 nyloc nut
AG 150	48	4	MC6-14	M10 *25 H.T Setscrew (8.8)
AG 150	49	4	MC6-12	M10 Washer
AG 150	50	4	MC6-27	M10 nyloc nut
AG 150	51	1	MC6-36	Valve block
AG 150	52	4	MC6-31	M8 x 130 mm Cap Bolt
AG 150	53	4	MC6-22	M8 plain washer
AG 150	54	4	MC6-23	M8 Nyloc nut
AG 150	55	2	MC6-27	M10 nyloc nut
AG 150	56	2	MC6-12	M10 plain washer
AG 150	57	2	MC6-14	M10 *25 H.T Setscrew (8.8)
AG 150	58	2	MC7-12	Auger Motor cover seal
AG 150	59	1	MC7-13	Auger Motor cover
AG 150	60	2	MC6-32	M10 spring washer
AG 150	61	2	MC6-12	M10 plain washer
AG 150	62	2	MC6-14	M10 *25 H.T Setscrew (8.8)
AG 150	63	2	MC7-14	Adjustable plate
AG 150	64	1	MC6-33	Hydraulic motor Auger OMR390
AG 150	65	2	MC7-15	Rubber side skirt
AG 150		2	MC6-37	Middle range pulley ratio (140-80)
AG 150		2	MC6-38	Highest range pulley ratio (140-60)



# Instruction Manual

Product Manual & Specifications

## *AG Dispenser models*

# AG175 Dispenser

Garnett Farms Engineering Limited  
Clay Bank Farm, Allstock, Nr. Knutsford,

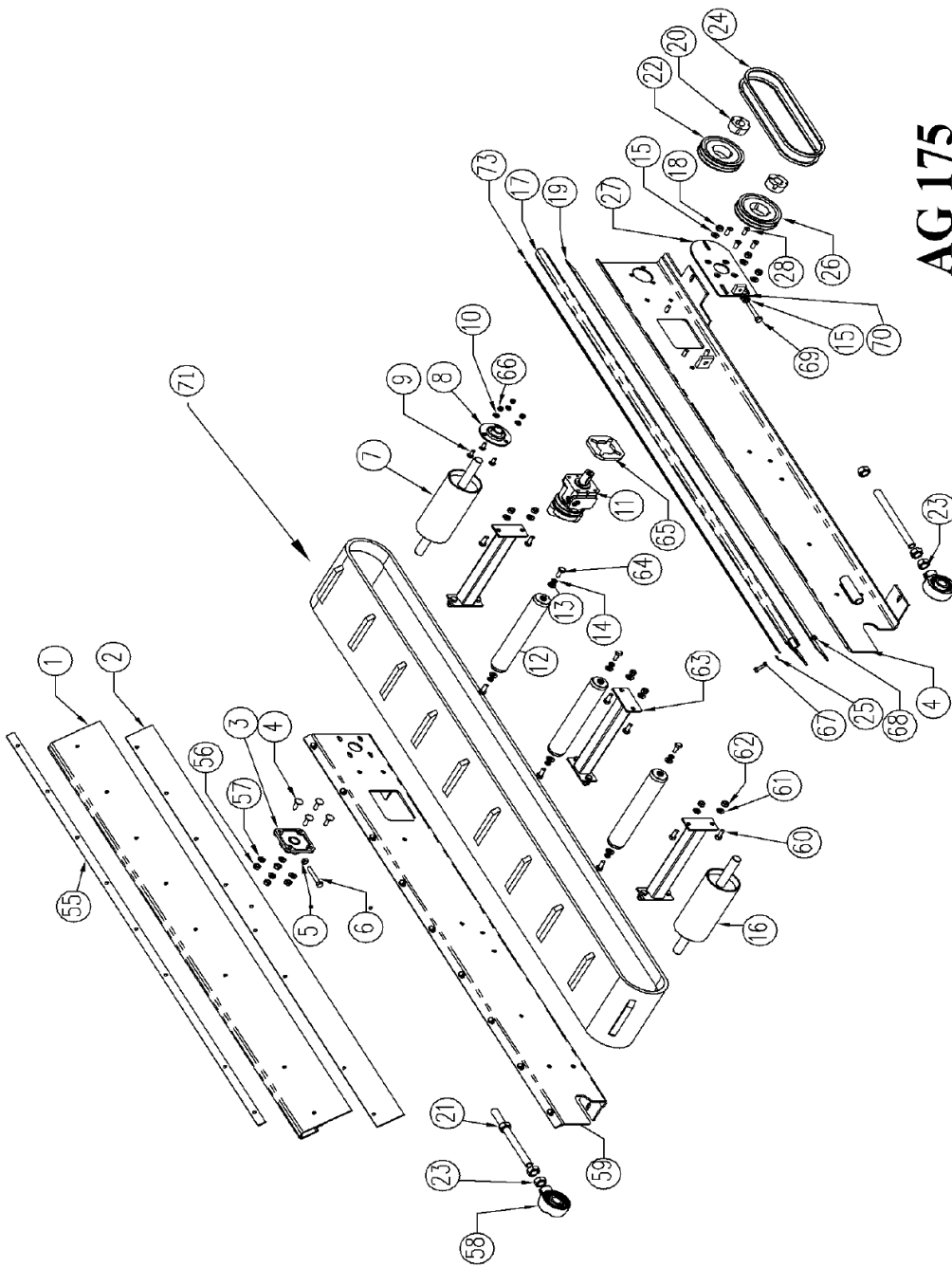
Cheshire, WA16 9NE  
England, UK

Tel: +44 (0)1565 722922 Fax: +44 (0)1565 723303

Website : [www.ag-products.co.uk](http://www.ag-products.co.uk) Email : [info@ag-products.co.uk](mailto:info@ag-products.co.uk)



**AG 175  
MAIN BIN**



# AG 175 CONVEYOR

AG 175

Machine	ITEM NO.	QUANTITY	PART NO.	DESCRIPTION
AG 175	1	1	MC8-1	Side skirt
AG 175	2	1	MC8-2	Side skirt (large) metal clamp
AG 175	3	1	MC8-8	Flange bearing (Conveyor)
AG 175	4	4	MC8-29	M10 *30 Cup Square bolt
AG 175	5	3	MC8-9	M10 plain nut
AG 175	6	1	MC8-15	M10 * 20 H.T Setscrew (8.8)
AG 175	7	1	MC8-3	Head roller
AG 175	8	1	MC8-7	Flange bearing
AG 175	9	3	MC8-29	M8 * 30 Cup Square Bolt
AG 175	10	3	MC8-22	M8 plain washer
AG 175	11	1	MC8-18	Hydraulic motor (conveyor) DH25
AG 175	12	3	MC8-4	Idler roller
AG 175	13	6	MC8-12	M10 plain M10 washer
AG 175	14	6	MC8-32	M10 spring washer
AG 175	15	2	MC8-12	M10 plain washer
AG 175	16	1	MC8-5	Head roller
AG 175	17	1	MC8-6	Side skirt
AG 175	18	4	MC8-27	M10 nyloc nut
AG 175	19	1	MC8-7	Side skirt (large) metal clamp
AG 175	20	2	MC8-1	Tapered bush
AG 175	21	2	MC8-3	Threaded tension bar
AG 175	22	1	MC8-2	Pulley
AG 175	23	6	MC8-10	M20 plain nut
AG 175	24	2	MC8-5	V belt (XPZ900 - STANDARD)
AG 175	25	18	MC8-22	M8 plain washer
AG 175	26	1	MC8-2	Pulley
AG 175	27	1	MC8-4	Tensioner plate assembly
AG 175	28	4	MC8-29	M8 * 30 CSK Socket screw
AG 175	29	1	MC8-8	Auger
AG 175	30	1	MC8-9	Main bin
AG 175	31	4	MC8-34	M10 *35 bolt
AG 175	32	4	MC8-12	M10 plain washer
AG 175	33	4	MC8-27	M10 nyloc nut
AG 175	34	1	MC8-10	Aperture plate
AG 175	35	4	MC8-16	M8 * 20 Cup Square Bolt
AG 175	36	4	MC8-22	M8 plain washer
AG 175	37	4	MC8-23	M8 nyloc nut
AG 175	38	2	MC8-11	Adjuster plate
AG 175	39	4	MC8-34	M10 *35 bolt
AG 175	40	4	MC8-12	M10 washer
AG 175	41	4	MC8-27	M10 nyloc nut
AG 175	42	1	MC8-36	Valve block
AG 175	43	4	MC8-23	M8 nyloc nut
AG 175	44	4	MC8-22	M8 plain washer
AG 175	45	4	MC8-31	M8 x 130 mm Cap Bolt
AG 175	46	2	MC8-27	M10 nyloc nut
AG 175	47	2	MC8-12	M10 washer
AG 175	48	2	MC8-34	M10 *35 bolt
AG 175	49	1	MC8-33	Hydraulic motor (Auger) OMH 390
AG 175	50	2	MC8-12	Motor cover seal
AG 175	51	1	MC8-13	Motor cover
AG 175	52	2	MC8-14	M10 *25 H.T Setscrew (8.8)
AG 175	53	2	MC8-12	M10 washer
AG 175	54	2	MC8-27	M10 nyloc nut
AG 175	55	2	MC8-14	Side skirt (small) metal clamp
AG 175	56	4	MC8-27	M10 nyloc nut
AG 175	57	4	MC8-12	M10 plain washer
AG 175	58	2	MC8-8	Hanger bearing
AG 175	59	1	MC8-15	Bolt assembly rear
AG 175	60	12	MC8-14	M10 *25 H.T Setscrew (8.8)
AG 175	61	8	MC8-12	M10 washer
AG 175	62	8	MC8-27	M10 nyloc nut
AG 175	63	3	MC8-16	Brace
AG 175	64	6	MC8-14	M10 * 25 H.T Setscrew (8.8)
AG 175	65	1	MC8-19	Motor spacer
AG 175	66	3	MC8-23	M8 thin nyloc nut
AG 175	67	3	MC8-16	M8 * 25 H.T setscrew (8.8)
AG 175	68	18	MC8-23	M8 thin nyloc nut
AG 175	69	1	MC8-35	M10 * 55 H.T setscrew (8.8)
AG 175	70	2	MC8-9	M10 plain nut
AG 175	71	1	MC9-17	Conveyor belt
AG 175		2	MC8-37	Middle range pulley ratio (140-80)
AG 175		2	MC8-38	Highest range pulley ratio (140-60)



*AG Dispenser models*

# AG200 Dispenser

Garnett Farms Engineering Limited

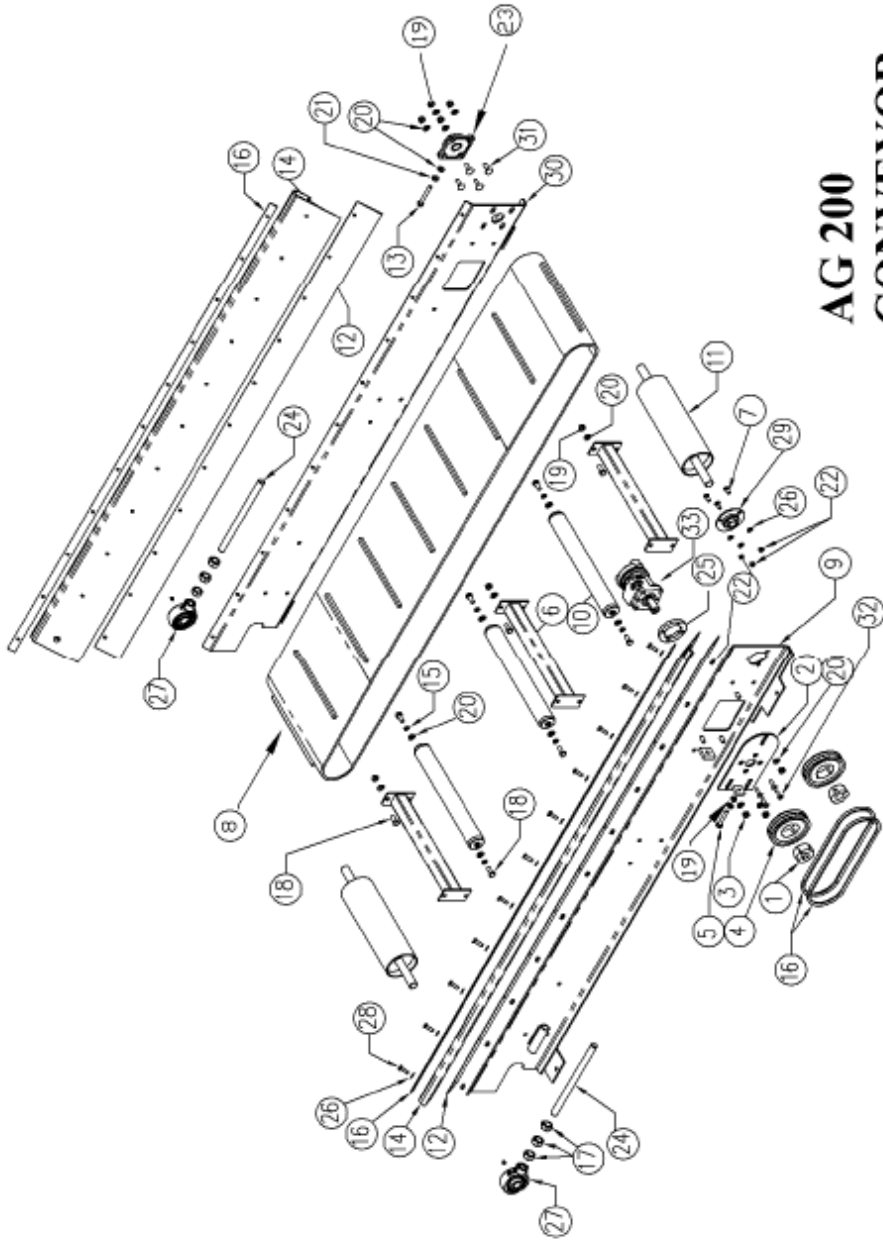
Clay Bank Farm, Allostock, Nr. Knutsford,

Cheshire, WA16 9NE

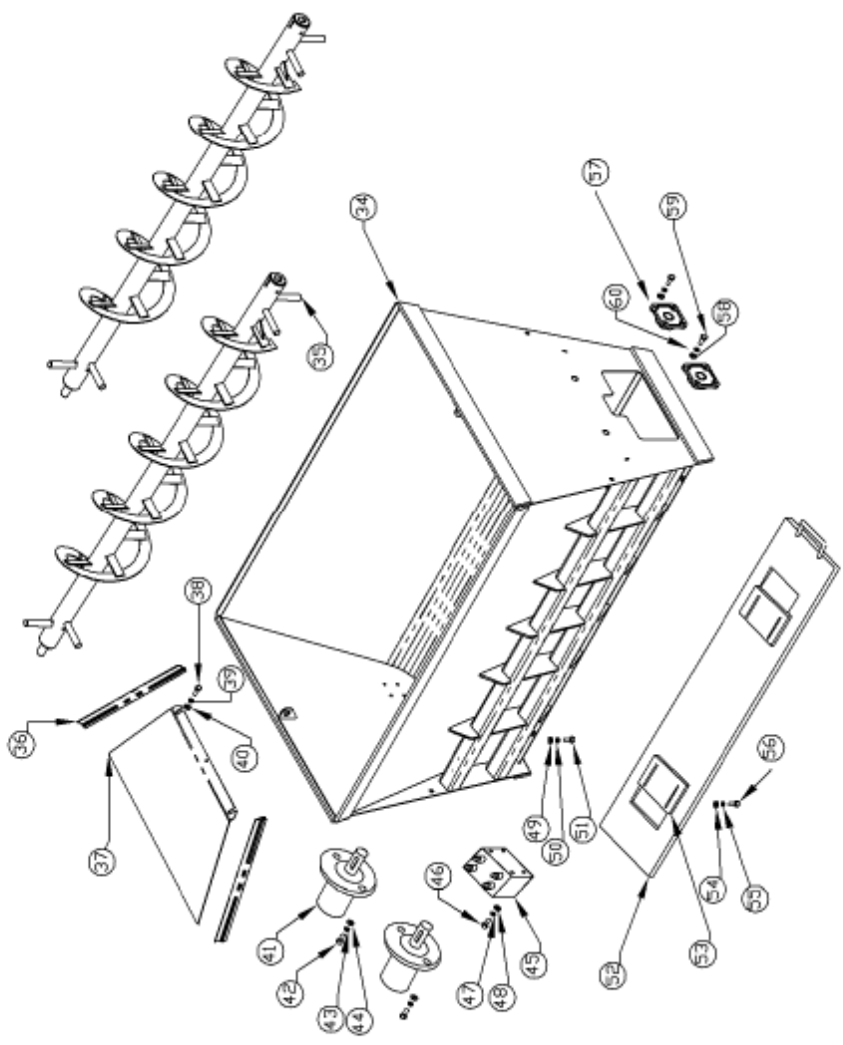
England, UK

Tel: +44 (0)1565 722922 Fax: +44 (0)1565 723303

Website : [www.ag-products.co.uk](http://www.ag-products.co.uk) Email : [info@ag-products.co.uk](mailto:info@ag-products.co.uk)



**AG 200  
CONVEYOR**



**AG 200  
MAIN BIN**

AG 200

Machine	ITEM NO.	QUANTITY	PART NO.	DESCRIPTION
AG 200	1	2	MC6-1	Tapered bush
AG 200	2	1	MC6-4	Tensioner plate assembly
AG 200	3	2	MC6-27	M10 nyloc nut
AG 200	4	2	MC6-2	Pulley
AG 200	5	1	MC6-15	M10*70 H.T Setscrew (8.8)
AG 200	6	3	MC9-1	Brace
AG 200	7	3	MC6-2	M8 *20 cup square bolt
AG 200	8	1	MC9-3	Conveyor belt
AG 200	9	1	MC9-4	Conveyor side assembly - Front
AG 200	10	3	MC9-5	Idler roller
AG 200	11	2	MC9-6	Head roller
AG 200	12	2	MC9-7	Side skirt (large) metal clamp
AG 200	13	1	MC6-15	M10 * 70 H.T Setscrew (8.8)
AG 200	14	2	MC9-8	Side skirt
AG 200	15	6	MC6-32	M10 spring washer
AG 200	16	2	MC9-9	Side skirt (small) metal clamp
AG 200	17	6	MC6-10	M20 plain nut
AG 200	18	18	MC6-14	M10 * 25 H.T setscrew (8.8)
AG 200	19	3	MC6-27	M10 nyloc nut
AG 200	20	3	MC6-12	M10 plain washer
AG 200	21	2	MC6-9	M10 plain nut
AG 200	22	22	MC6-23	M8 nyloc nut
AG 200	23	1	MC6-7	Flange bearing
AG 200	24	2	MC6-3	Threaded tension bar
AG 200	25	1	MC6-19	Motor spacer
AG 200	26	3	MC6-22	M8 plain washer
AG 200	27	2	MC6-8	Bearing hanger
AG 200	28	22	MC6-16	M8 * 25 H.T Setscrew (8.8)
AG 200	29	1	MC6-8	Flange bearing (conveyor)
AG 200	30	1	MC9-10	Conveyor side assembly - rear
AG 200	31	4	MC6-29	M10 * 30 cup square bolt
AG 200	32	4	MC6-29	M8 * 30 CSK socket screw
AG 200	33	1	MC6-18	Hydraulic motor - conveyor
AG 200	34	1	MC9-11	Main bin
AG 200	35	2	MC9-12	Auger (AG 200)
AG 200	36	2	MC9-13	Motor cover seal
AG 200	37	1	MC9-14	Motor cover
AG 200	38	2	MC6-14	M10 X 25mm bolt
AG 200	39	2	MC6-12	M10 washer
AG 200	40	2	MC6-27	M10 nyloc nut
AG 200	41	2	MC6-33	Auger hydraulic motor
AG 200	42	4	MC6-34	M10 x 35 mm bolt
AG 200	43	4	MC6-12	M10 washer
AG 200	44	4	MC6-27	M10 nyloc nut
AG 200	45	1	MC6-36	Valve
AG 200	46	4	MC6-31	M8 x 130 mm Cap Bolt
AG 200	47	4	MC6-22	M8 washer
AG 200	48	4	MC6-23	M8 nyloc nut
AG 200	49	4	MC6-27	M10 nyloc nut
AG 200	50	4	MC6-12	M10 washer
AG 200	51	4	MC6-34	M10 x 35 mm bolt
AG 200	52	1	MC9-15	Aperture plate
AG 200	53	2	MC9-16	Adjuster plate
AG 200	54	4	MC6-2	M8 * 20 Cup Square Bolt
AG 200	55	4	MC6-22	M8 plain washer
AG 200	56	4	MC6-23	M8 nyloc nut
AG 200	57	2	MC6-7	Flange bearing auger
AG 200	58	8	MC6-12	M10 plain washer
AG 200	59	8	MC6-34	M10 *35 bolt
AG 200	60	8	MC6-27	M10 nyloc nut
AG 200		2	MC6-37	Middle range pulley ratio (140-80)
AG 200		2	MC6-38	Highest range pulley ratio (140-60)
AG 200		1	MC9-17	Users manual