



# Instruction Manual

Product Manual & Specification

## *AG Dispenser models*



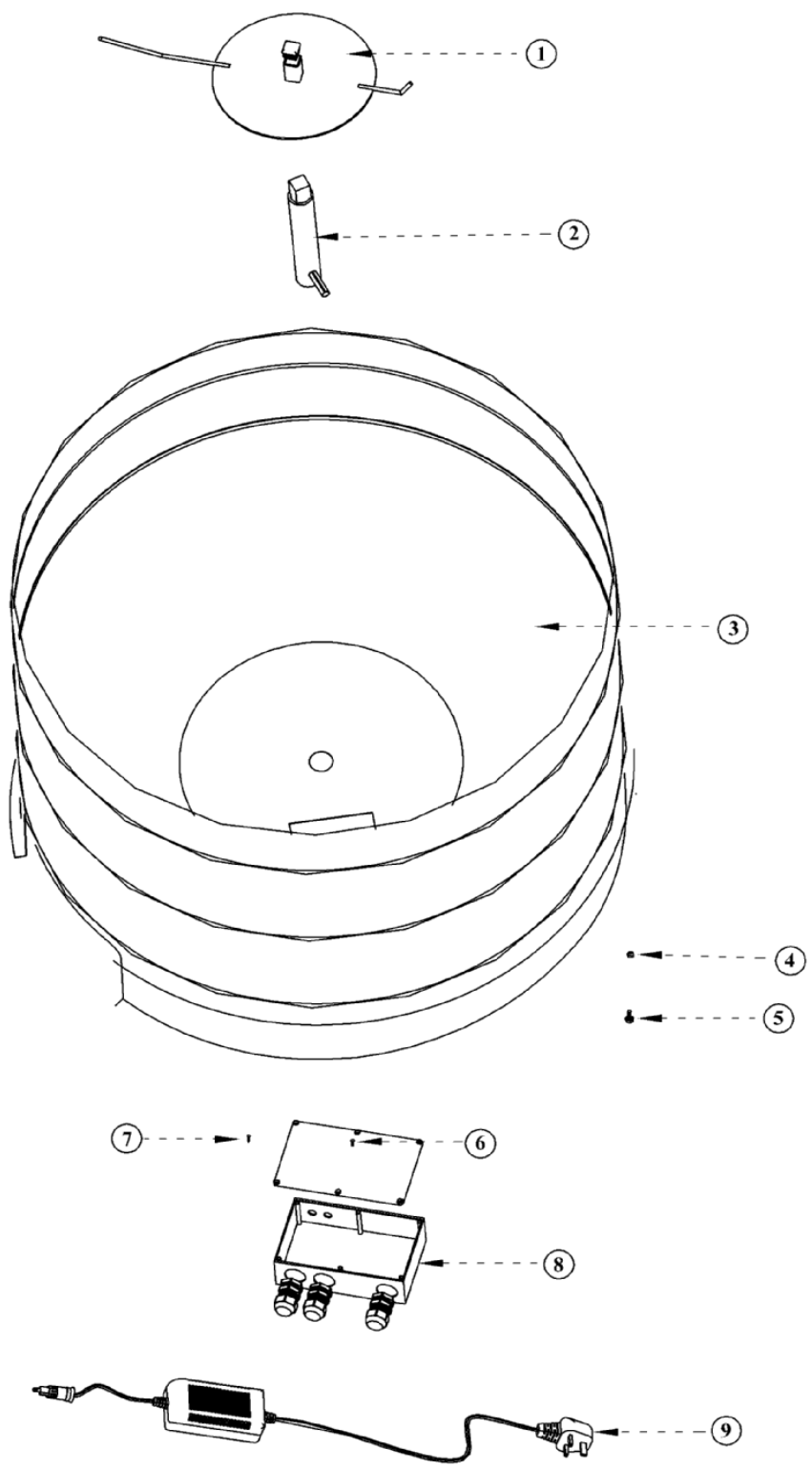
## *AG Maxi*

### Garnett Farms Engineering Limited

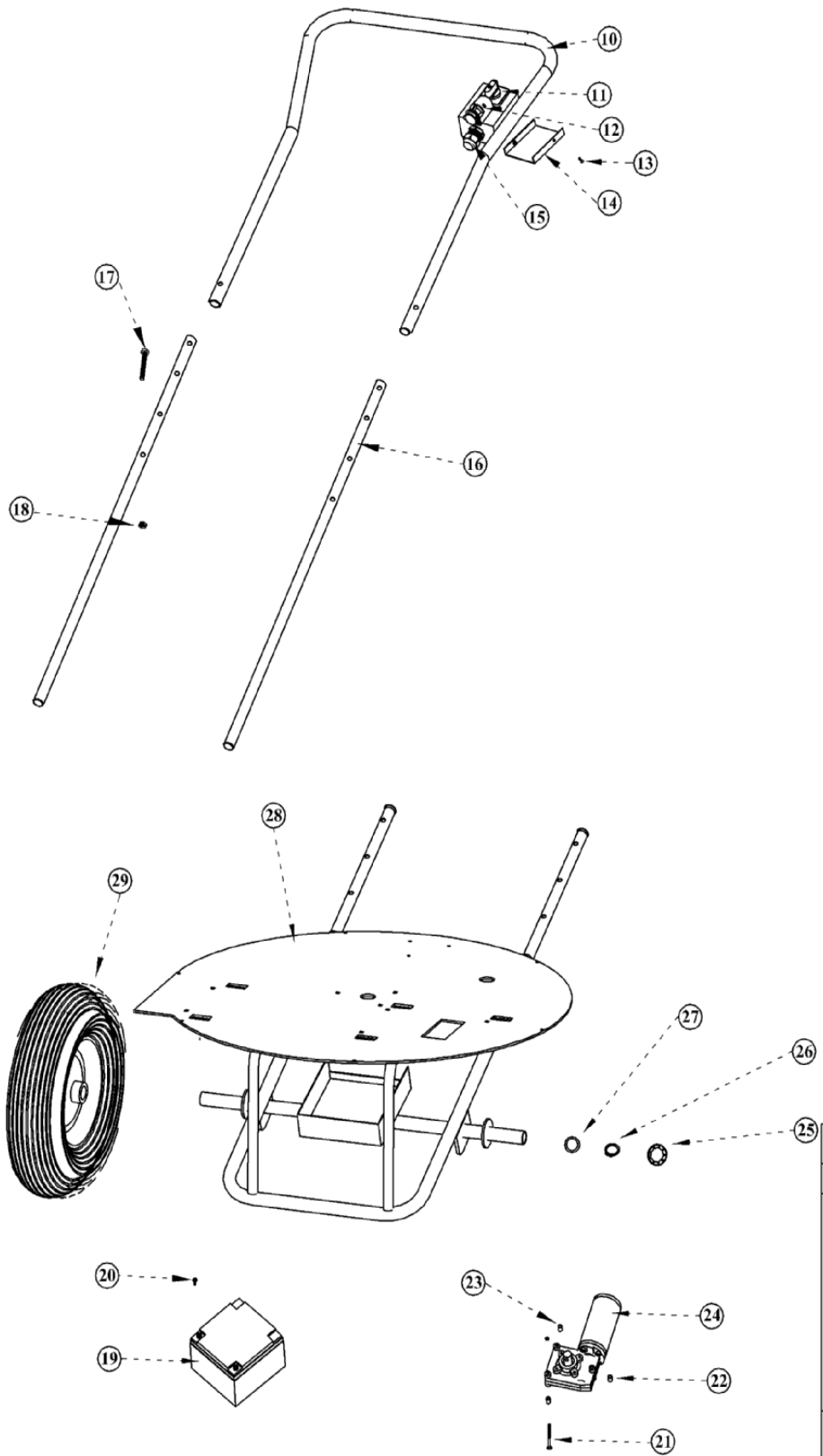
Clay Bank Farm, Allostock, Nr. Knutsford,  
Cheshire, WA16 9NE  
England, UK

Tel: +44 (0)1565 722922      Fax: +44 (0)1565 723303  
Website : [www.ag-products.co.uk](http://www.ag-products.co.uk)      Email : [info@ag-products.co.uk](mailto:info@ag-products.co.uk)

REVISIONS			
NO.	DATE	DESCRIPTION	APPROVED



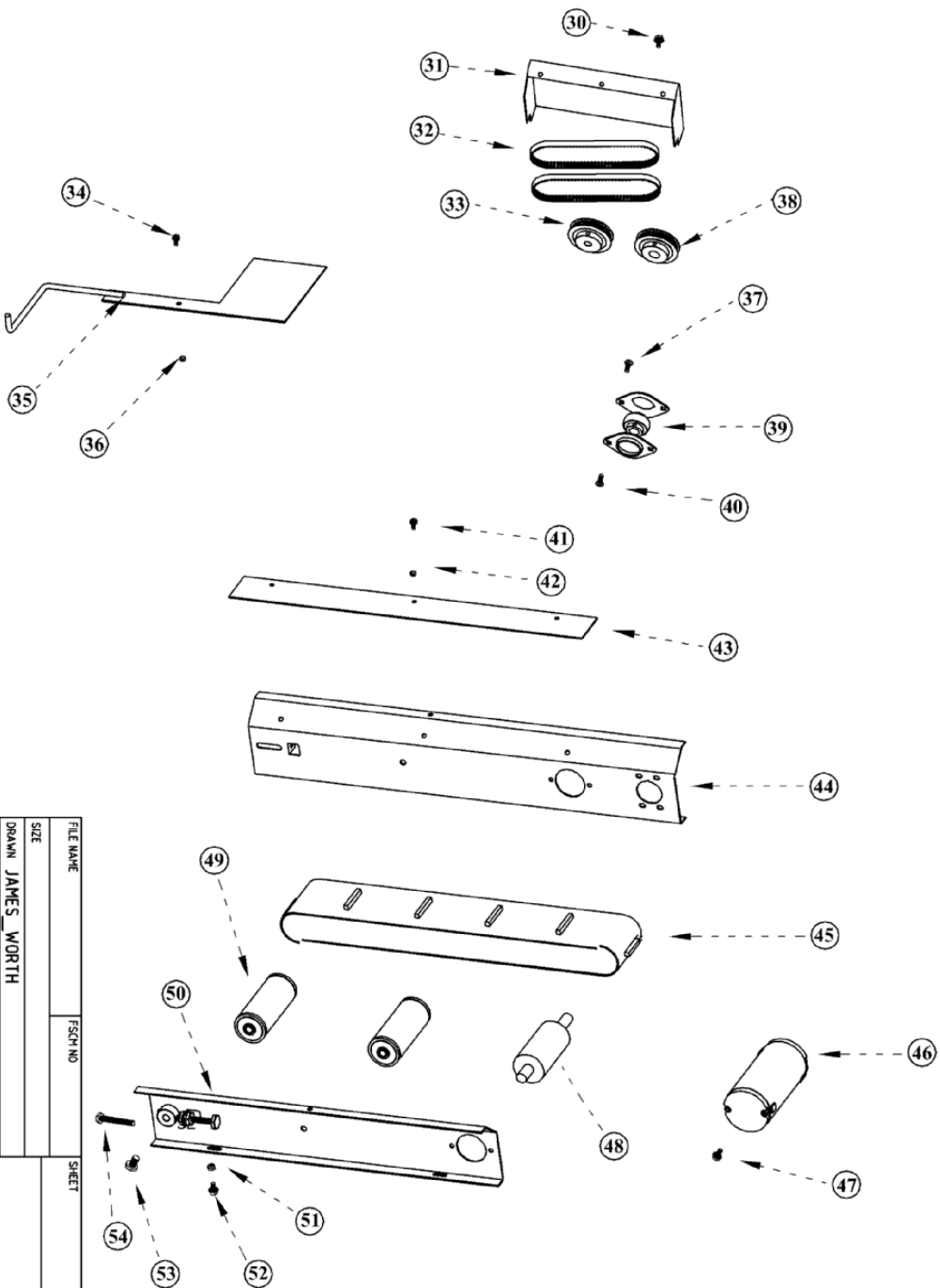
FILE NAME	AG MAXI
CONTRACT NO	-----
ISSUED BY	USMAN JAMES WORTH
CHECK DATE	24/05/07
APPR.	AJ GARNETT
ISSUED BY	AJ GARNETT
SIZE	A3
SCALE	1:1
WEIGHT	
SHEET	
REV	



FILE NAME	AG MAXI
CONTRACT NO.	
DRAWN	JAMES WORTH
CHECKED	AJ GARNETT
APPR.	AJ GARNETT
ISSUED	24/05/07
SCALE	
SIZE	
WEIGHT	
SHEET	
REV	

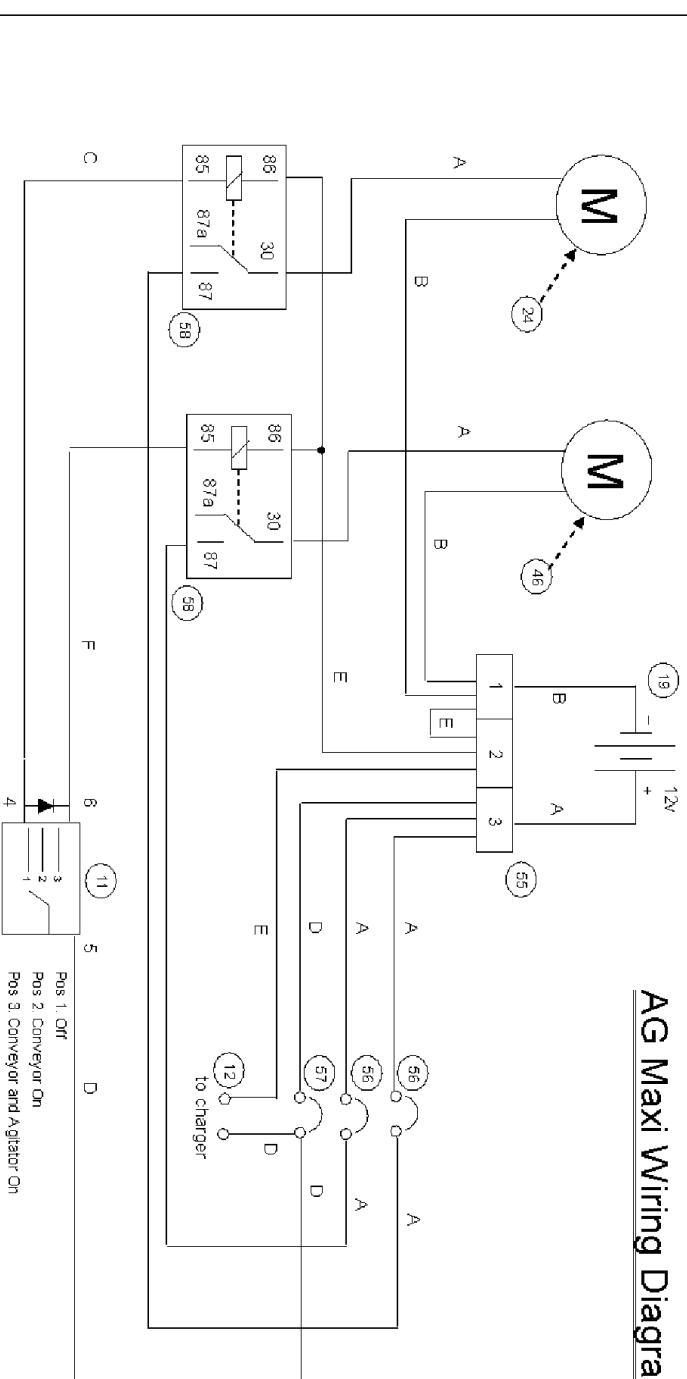
AG MAXI  
 AG MAXI BASE

REVISIONS		DATE	APPROVED
ZONE	REV		



FILE NAME	FSCH NO	SHEET	SCALE
SIZE			
DRAWN	JAMES MORTH		AGMAXI
CHECK	AJ GARNETT		
APPR.	AJ GARNETT		
ISSUED			
REV		DWG NO	
CONTRACT NO			

# AG Maxi Wiring Diagram



## Wiring Code


- A Red 4mm Diameter
- B Black 4mm Diameter
- C Yellow 2mm Diameter
- D Red 2mm Diameter
- E Black 2mm Diameter
- F Grey 2mm Diameter

## Parts List

- 11 Selector Switch (with rectifier IN5408)
- 12 Charger Port
- 19 Battery 12V 26AH
- 24 Agitator Motor
- 46 Conveyor Motor
- 55 Terminal Block
- 56 Motor Circuit Breakers, 35A
- 57 Charger Circuit Breaker, 5A
- 58 Motor Relays, 40A

## Wiring of Switch

- bypass wire on terminals 5 and 3
- bypass wire on terminals 1 and 3
- rectifier between terminals 1 and 3
- terminal 4 to relay 85 (agitator) wire C
- terminal 6 to relay 85 (conveyor) wire F

Revision 1:	
Revision 2:	
Revision 3:	
Revision 4:	
Client:	
Job Title:	
Draw No.:	XXXXXXXXXX
Date:	XXXXXXXXXX
Scale:	XXXXXXXXXX
Drawn:	XXXXXXXXXX
	
Office: Garnett Farms Engineering Claybank Farm Allostock Knustford Cheshire WA16 9NE TEL: 01963 725968 FAX: 01963 725905	

# Garnett Farms Engineering Limited

Clay Bank Farm, Allstock, Nr Knutsford, Cheshire WA16 9NE Tel: 01565 722 922 Fax: 01565 723303

Machine	ITEM NO.	QUANTITY REQUIRED	PART NO.	DESCRIPTION
MAXI	1	1	MC2-18-1	AGITATOR
MAXI	2	1	MC2-17-1	AGITATOR SHAFT
MAXI	3	1	MC2-02	DRUM
MAXI	4	8	MC2-23	M5 NUT
MAXI	5	8	MC2-24-2	M5* 12mm BOLT
MAXI	6	6	MC3-01-3	M4 * 10mm SCREW
MAXI	7	3	MC3-01-4	Diameter 3* 16mm SCREW
MAXI	8	1	MC2-19	BREAKER BOX
MAXI	9	1	MC3-04-7	CHARGER YCB4A12
MAXI	10	1	MC2-04-1	UPPER HANDLE
MAXI	11	1	MC3-04-5	CAM SWITCH ASSEMBLY
MAXI	12	1	MC3-04-8	CHARGER PORT
MAXI	13	2	MC3-01-3	M4 * 10mm SCREW
MAXI	14	1	MC3-04-9	SWITCH GEAR COVER
MAXI	15	1	MC3-02-1	GROMMIT
MAXI	16	2	MC2-03	LOWER HANDLE
MAXI	17	2	MC3-01-5	M8* 60mm BOLT
MAXI	18	2	MC3-01-6	M8 NUT
MAXI	19	1	MC2-02-1	BATTERY NP2412R
MAXI	20	2	MC3-01-2	M5 * 12mm BOLT
MAXI	21	3	MC3-01-7	M6 * 70mm BOLT
MAXI	22	3	MC3-02-2	SPACER
MAXI	23	3	MC3-01-1	M6 NUT
MAXI	24	1	MC2-20	MOTOR (PM50-63-2-12V-GB:4 50:1) AGITATOR
MAXI	25	2	MC3-06-1	WHEEL CAP
MAXI	26	2	MC3-06-2	WHEEL CIR CLIP
MAXI	27	2	MC3-06-3	WHEEL WASHER
MAXI	28	1	MC2-01-1	MAIN FRAME
MAXI	29	2	MC3-06-4	WHEEL
MAXI	30	3	MC3-01-8	M6 * 12mm BOLT
MAXI	31	1	MC2-15	TIMING BELT COVER
MAXI	32	2	MC2-14	TIMING BELT ( BT5/450/10)
MAXI	33	1	MC2-12	PULLEY (38T5-15-S16)
MAXI	34	1	MC3-01-2	M5 * 12mm BOLT
MAXI	35	1	MC2-16	ADJUSTER PLATE
MAXI	36	1	MC2-23	M5 NUT
MAXI	37	2	MC3-01-9	M6 * 16mm CUPSQUARE BOLT
MAXI	38	1	MC2-13	PULLEY (38T5-15-S09)
MAXI	39	2	MC2-09	BRG SLFE16
MAXI	40	2	MC3-01-9	M6 * 16mm CUPSQUARE BOLT
MAXI	41	6	MC3-01-8	M6 * 12mm BOLT
MAXI	42	6	MC3-01-1	M6 NUT
MAXI	43	2	MC2-11	SIDE SKIRT PLATE
MAXI	44	1	MC2-06-1	CONVEYOR DRIVE SIDE
MAXI	45	1	MC2-05	CONVEYOR BELT
MAXI	46	1	MC2-22	MOTOR PM50-63-2-12V CONVEYOR
MAXI	47	4	MC3-01-8	M6 * 12mm BOLT
MAXI	48	1	MC2-8	HEAD ROLLER
MAXI	49	2	MC2-7	IDLER ROLLER
MAXI	50	1	MC2-06-2	CON SIDE
MAXI	51	4	MC3-01-8	M6 * 12mm BOLT
MAXI	52	4	MC3-01-1	M6 NUT
MAXI	53	6	MC3-01-11	M10 * 16mm BOLT
MAXI	54	2	MC3-01-5	TENSIONER BOLT M8 * 60
MAXI	55	1	MC3-04-1	TERMINAL BLOCK
MAXI	56	2	MC3-04-3	CIRCUIT BREAKER MOTOR/AGITATOR (40 ampere)
MAXI	57	1	MC3-04-4	CHARGING BREAKER (5 ampere)
MAXI	58	2	MC3-04-6	RELAY 1 (40 ampere)
MAXI		1	MC3-05-1	PRODUCT MANUAL
MAXI		1	MC3-05-2	PULLEY - LIME 25T5-15+S09
MAXI		2	MC3-05-3	PULLEY V-BELT BT5/420/10
MAXI			MC3-05-5	TRI WHEELS